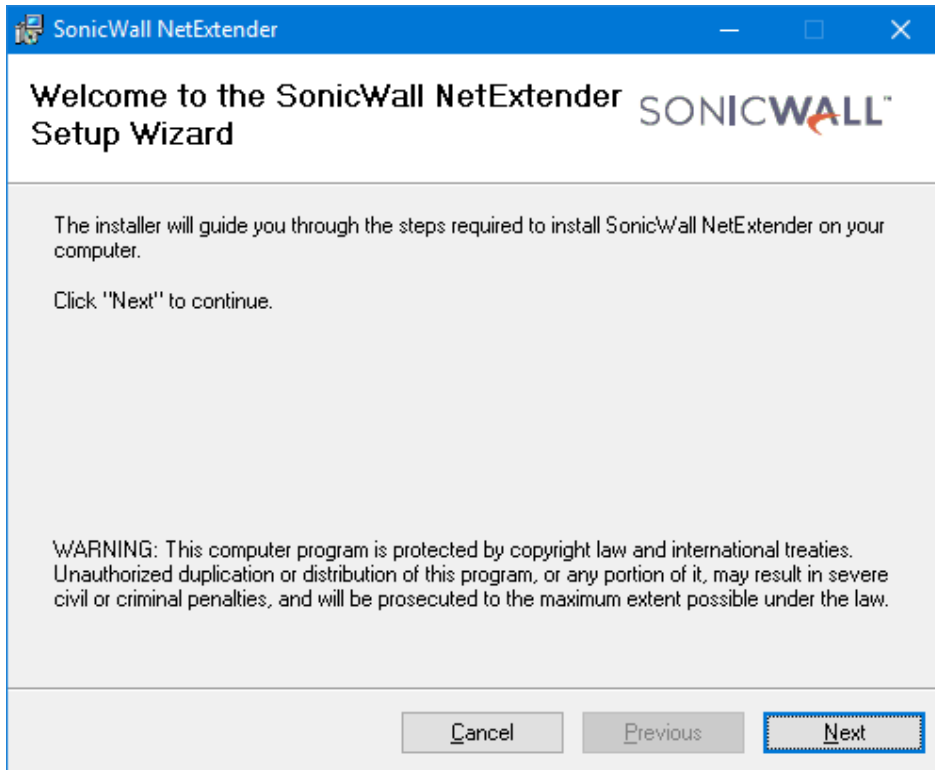
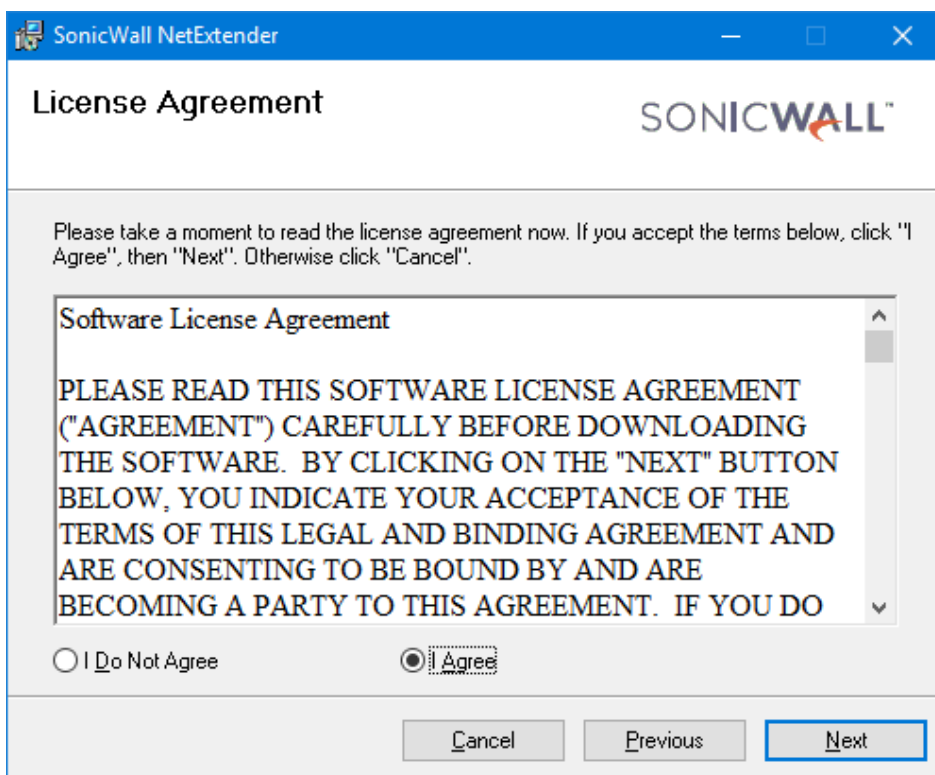


# Studio NYL Denver – SSL-VPN Setup Instructions

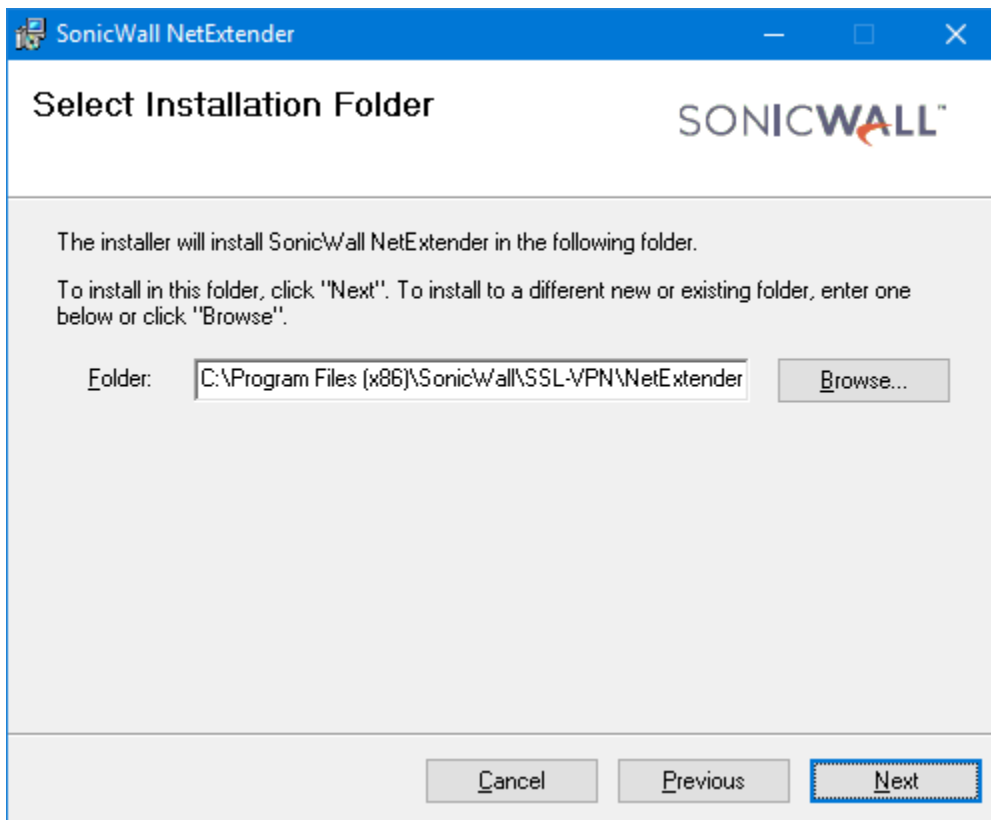
1. For Windows, download the NetExtender here - <https://www.sonicwall.com/products/remote-access/vpn-clients/>  
For Macs, download Mobile Connect - <https://apps.apple.com/us/app/sonicwall-mobile-connect/id822514576?mt=12>
2. Click NEXT at the beginning of the Setup Wizard (this install process will only need to be done once)



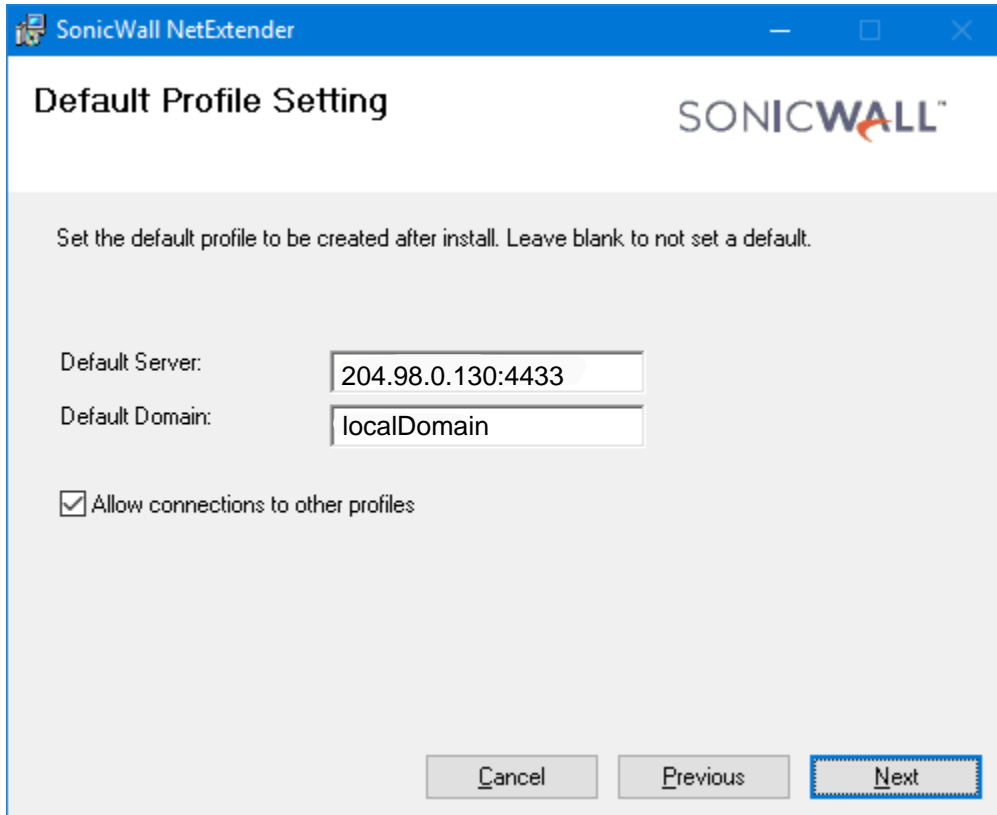
3. Click "I Agree" then click NEXT



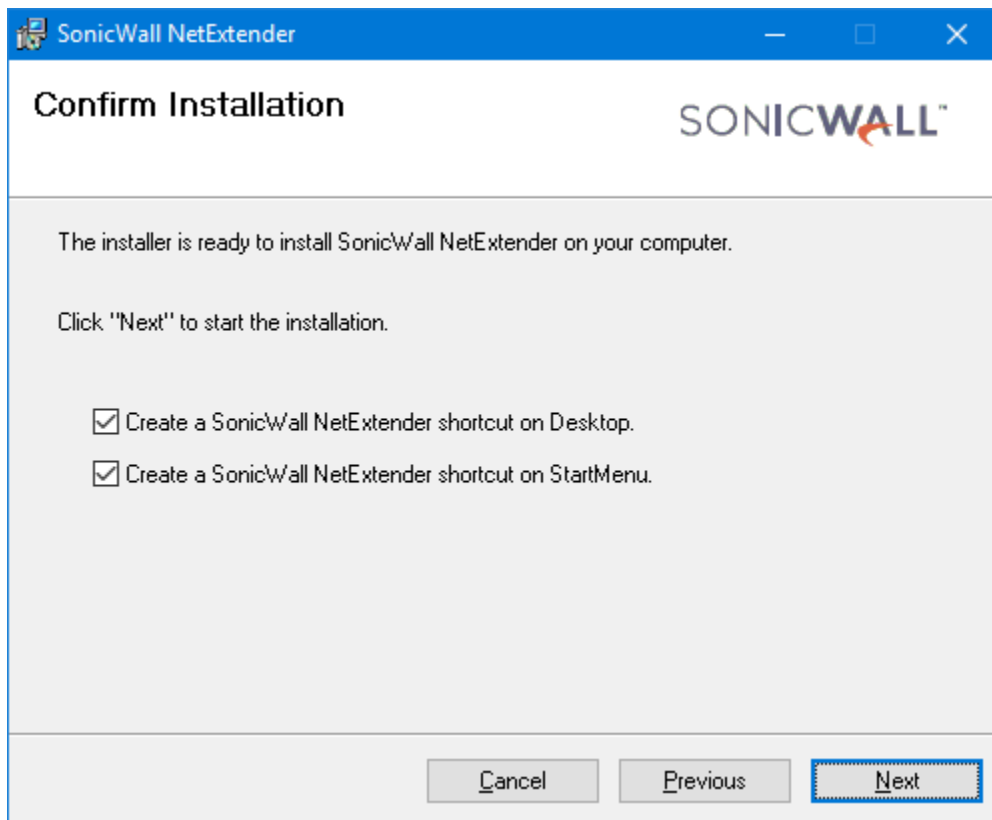
4. Leave the install folder as the default value, then click NEXT



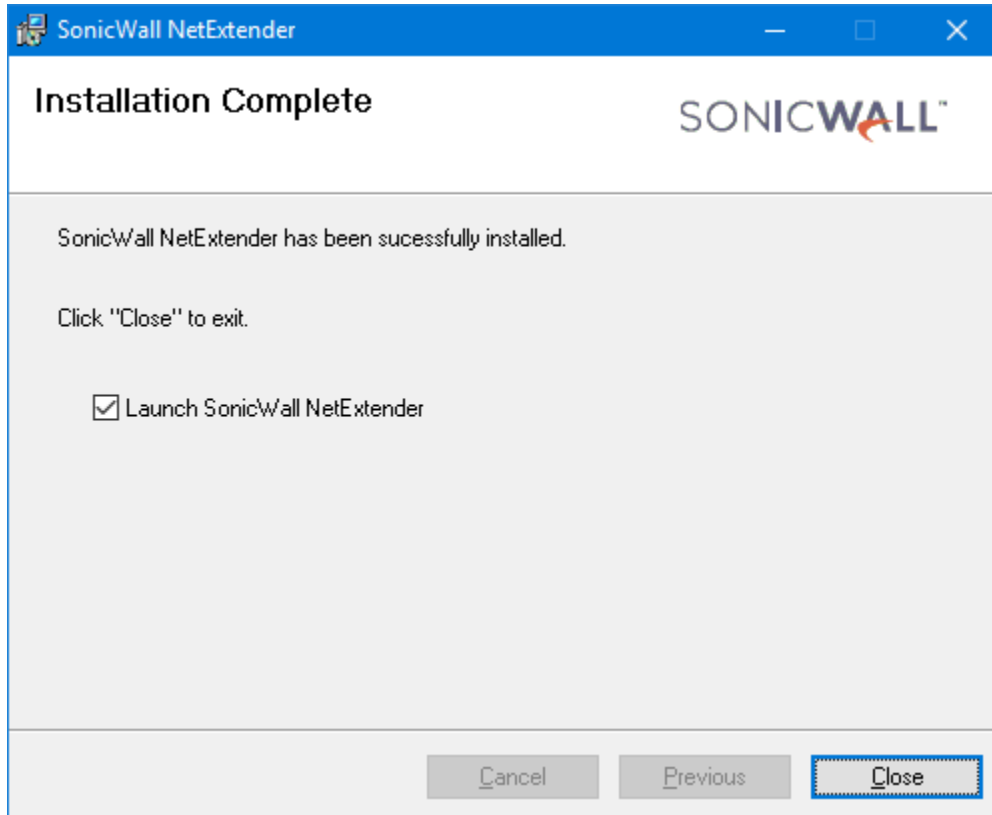
5. Enter the Default Server: 204.98.0.130:4433 and Default Domain: localDomain then click NEXT



6. Then click NEXT to have the system add shortcuts for later access

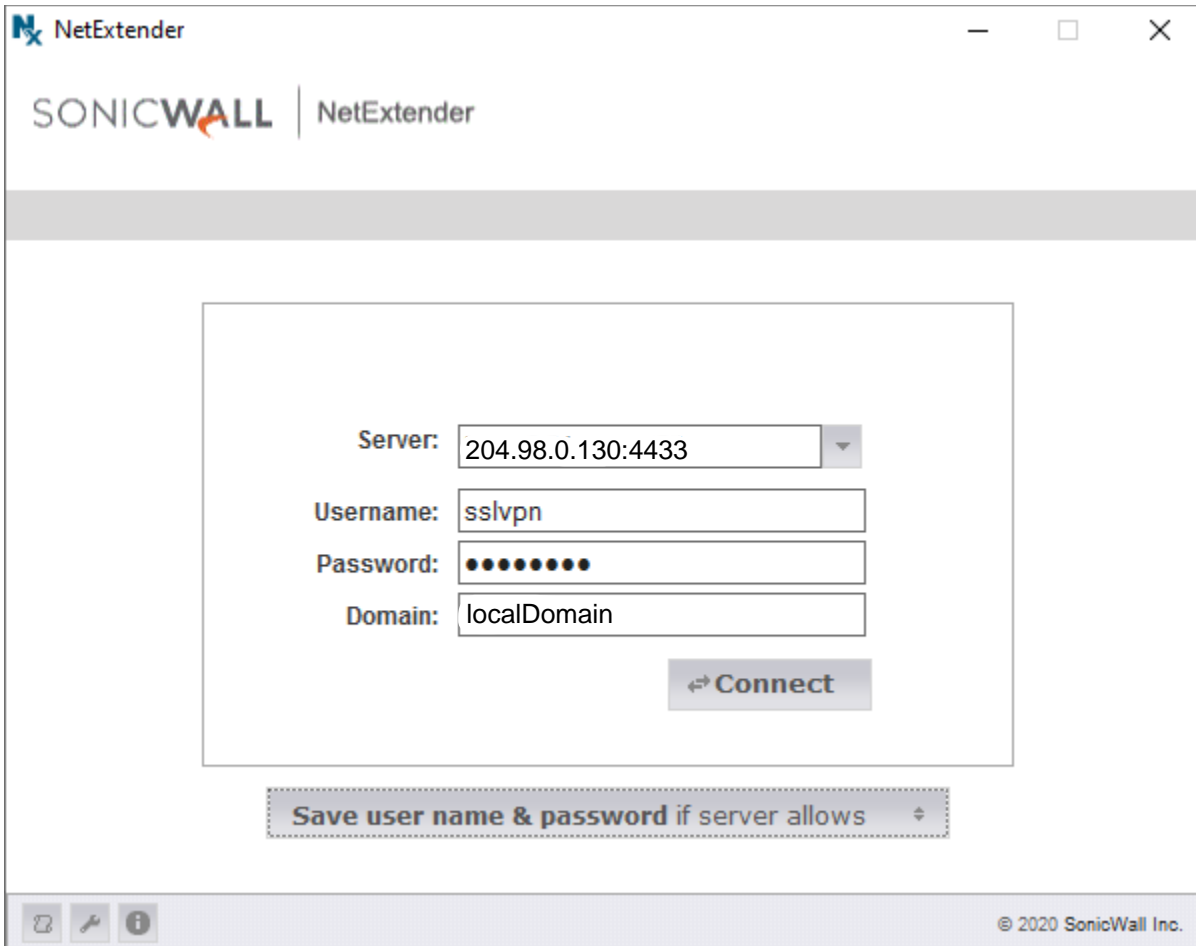


7. After installation, click Close.



After install, reboot the computer! This is important as it may not ask and maybe necessary before the program will function properly.

8. When connecting to the server, use the following (Your Manager will have the password), then click CONNECT  
Verify the address is 204.98.0.130:4433, enter your username and your password, and the domain is **STUDIONYL**

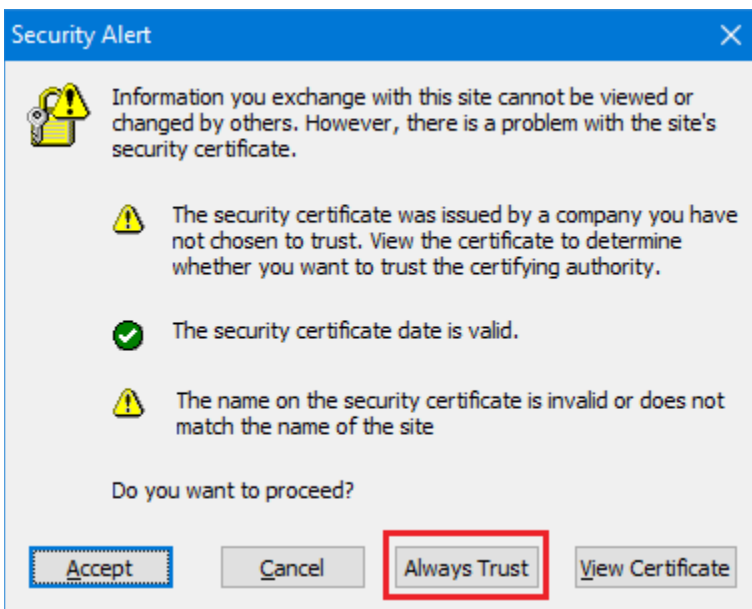


The screenshot shows the SonicWall NetExtender connection interface. At the top, the SonicWall logo and 'NetExtender' text are visible. The main area contains a form with the following fields:

- Server: 204.98.0.130:4433
- Username: sslvpn
- Password: [masked with 10 dots]
- Domain: localDomain

A 'Connect' button is located below the form. Below the form is a checkbox labeled 'Save user name & password if server allows'. The bottom of the window shows a status bar with icons and the copyright notice '© 2020 SonicWall Inc.'.

9. Click "Always Trust" to the Certificate screen

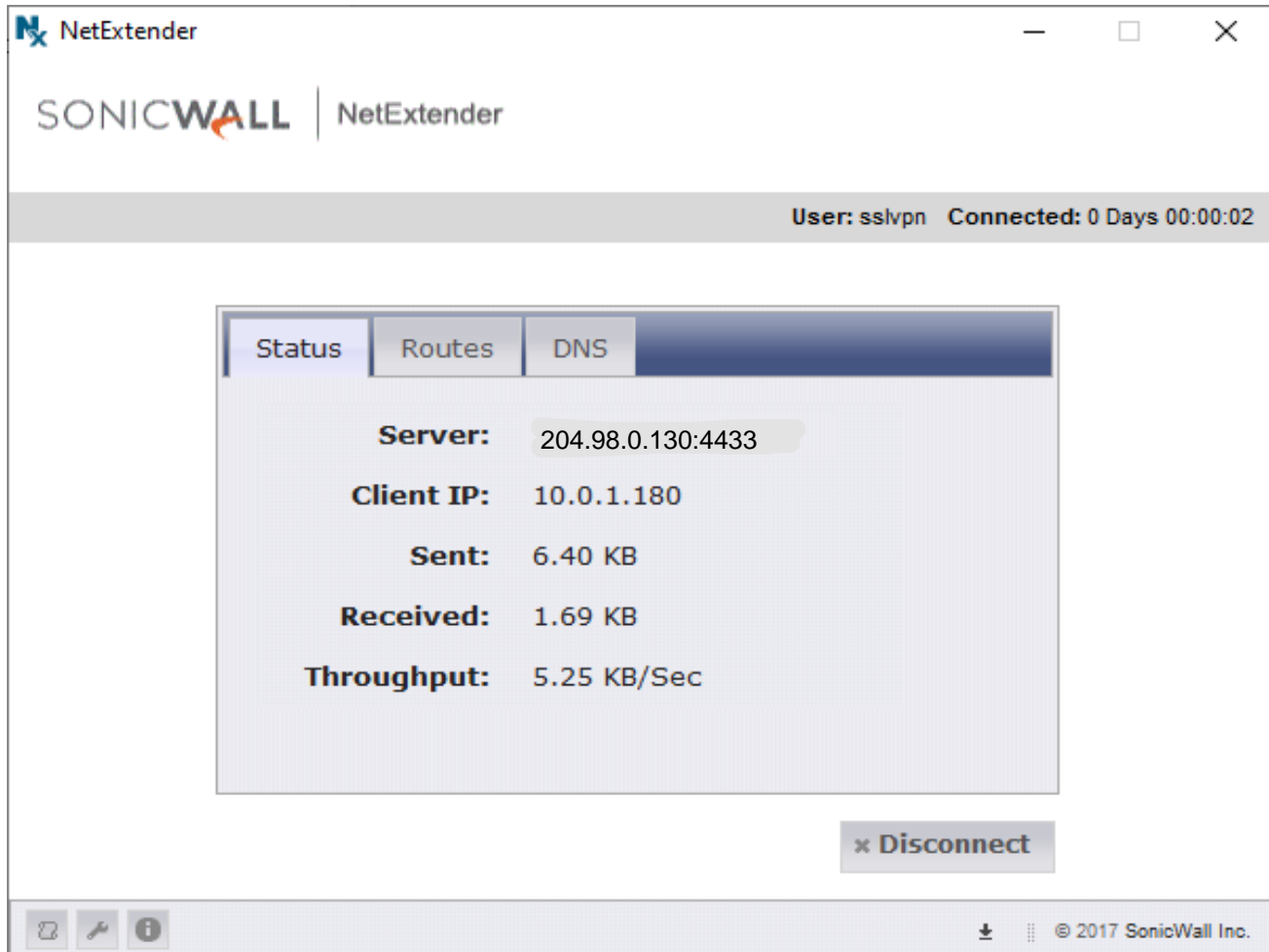


The screenshot shows a 'Security Alert' dialog box with a blue header and a close button. The main text reads: 'Information you exchange with this site cannot be viewed or changed by others. However, there is a problem with the site's security certificate.' Below this are three items:

- A warning icon: 'The security certificate was issued by a company you have not chosen to trust. View the certificate to determine whether you want to trust the certifying authority.'
- A checkmark icon: 'The security certificate date is valid.'
- A warning icon: 'The name on the security certificate is invalid or does not match the name of the site'

At the bottom, it asks 'Do you want to proceed?' and provides four buttons: 'Accept', 'Cancel', 'Always Trust' (highlighted with a red box), and 'View Certificate'.

10. After the reboot from the first install, you should now be able to connect. To disconnect the session, click the “Disconnect” button. During your session, you can minimize this screen while you work.



11. After the VPN connection has been established, you can access your Shared Server Drives.